

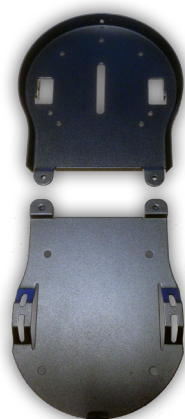
CM-CMB/CMW/WMB/ WMW

Mounting solutions for CM-series PTZ camera's



These mounting solutions can be used in combinations with the Avonic CM-series PTZ camera's. Most wall and ceiling plates are available in black and white.

CM-CMB

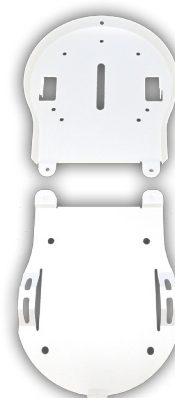


Black Ceiling mount plate for Avonic CM series camera's

Dimensions product (LxBxH)	160x140x12 (mm)
----------------------------	-----------------

Weight product	0,4kg
----------------	-------

CM-CMW



White Ceiling mount plate for Avonic CM series camera's

Dimensions product (LxBxH)	160x140x12 (mm)
----------------------------	-----------------

Weight product	0,4kg
----------------	-------

CM-WMB



Black Wall mount plate for Avonic CM series camera's

Dimensions product (LxBxH)	225x110x95 (mm)
----------------------------	-----------------

Weight product	0,7kg
----------------	-------

CM-WMW



White Wall mount plate for Avonic CM series camera's

Dimensions product (LxBxH)	225x110x95 (mm)
----------------------------	-----------------

Weight product	0,42kg
----------------	--------

Version 1.1