



AREC KL-3W

Media Station



- All-in-One Device with 7" LCD Display to Offer Up to 3 Full HD Video Sources Capturing, Mixing, Switching, Recording and Live Streaming
- Portable Design for Easy Move and Place
- Next Generation System Design Provides a Simpler and More Intuitive Interface

Main Features

Portable Media Capture Solution

Coming with 7" LCD display, AREC KL-3W is a lightweight, portable and all-in-one Media Station, allowing users to simultaneously capture, switch, mix, stream and record live events in a simple and efficient way.

Compatible with AREC AM-601 Wireless Microphone*, AREC KL-3W makes it simple and convenient to stream and record multi-sources activities in demanding portable applications.

* Optional accessory, to be purchased separately.



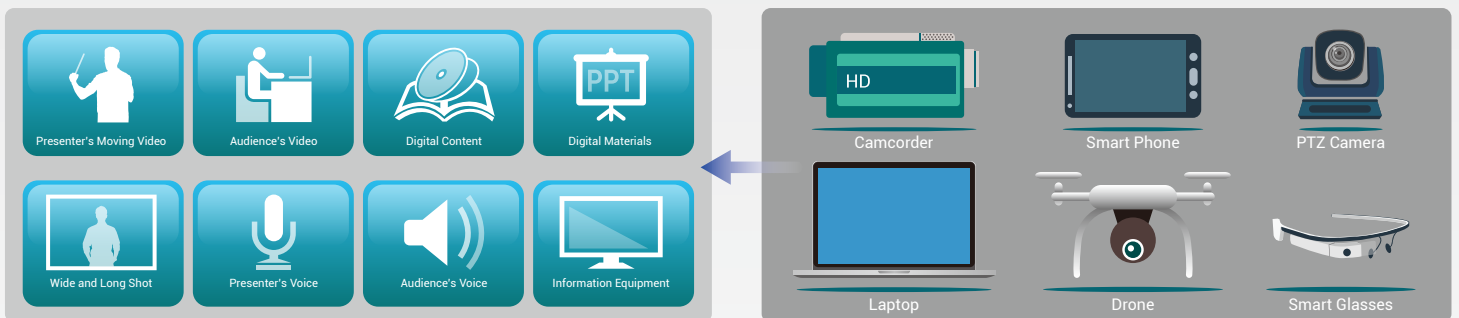
Capture Up to 3 Video Sources at the Same Time

KL-3W supports capturing up to 3 video sources through HDMI / VGA/ RJ45 interfaces*. Through suggested video streaming app, KL-3W also can receive live videos from iOS or Android smart phone and tablet. It allows users to add a video source via mobile phone camera or other novel device.

With this new feature, KL-3W is compatible with camcorder, laptop, PC, network camera, mobile phone, drone, digital microscope, and wireless microphone etc. With audio support, KL-3W can mix audio via HDMI, 3.5mm stereo and AREC wireless microphone.

* Supports DVI and component video cable inputs with appropriate DVI to HDMI or component to VGA adaptors.

** To receive a live video from your mobile device, please apply necessary settings in advance. Please refer to KL-3W user manual for more details.



Achieve Multi-Source Live Streaming

KL-3W provides multi-source live streaming to broadcast the live image and voice of an on-going lecture or event on YouTube, Facebook, UStream, Twitch and other live broadcasting websites, allowing any participant to attend at any location in the world.



Flexible 3-Inputs and 4 Recording Video Files

AREC KL-3W supports up to 3-input sources capturing and up to 4 synchronized recording videos. Users can choose mixed recording mode or mixed plus original sources mode respectively. The mixed plus original sources recording mode provides 1 mixed video and 3 individual synchronized source videos for flexible post-production use.



Real-Time Assistant in Video Making

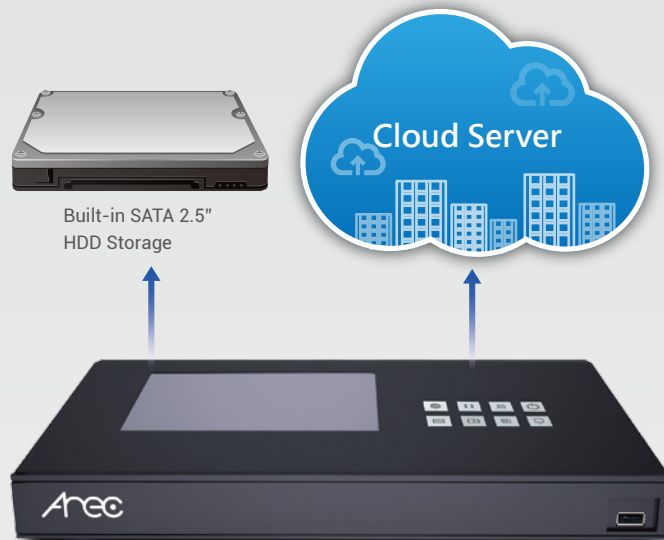
Built-in Online Director, AREC KL-3W provide a more intuitive experience for live production and streaming. It allows users to switch and mix between multiple cameras and digital content sources. It also supports control and monitoring the cameras' field of view, streaming setting, and adding pre-made background and overlay images for live production.



Web-based Online Director

Built-in Hard Drive Storage & Backup

Equipped with 1TB hard drive, KL-3W not only saves hundreds of hours recording videos but also enhances the overall efficiency. To satisfy different requirements, KL-3W also supports automatic and remote FTP backup to keep the recording safe.



New Features for Live Video Production

KL-3W adds new features on its Online Director by letting users enjoy the fun of being a video director without any professional experience. Users can easily add pre-made background images, computer graphics (titles), and custom themes when broadcasting. If users just want to record a video with a fixed layout, push-buttons on the top machine allows for easy operation.



Background Images



Recording Layouts



Overlay Images

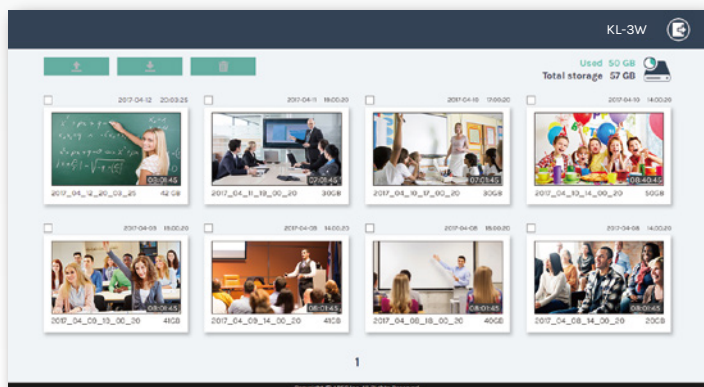


Custom Themes



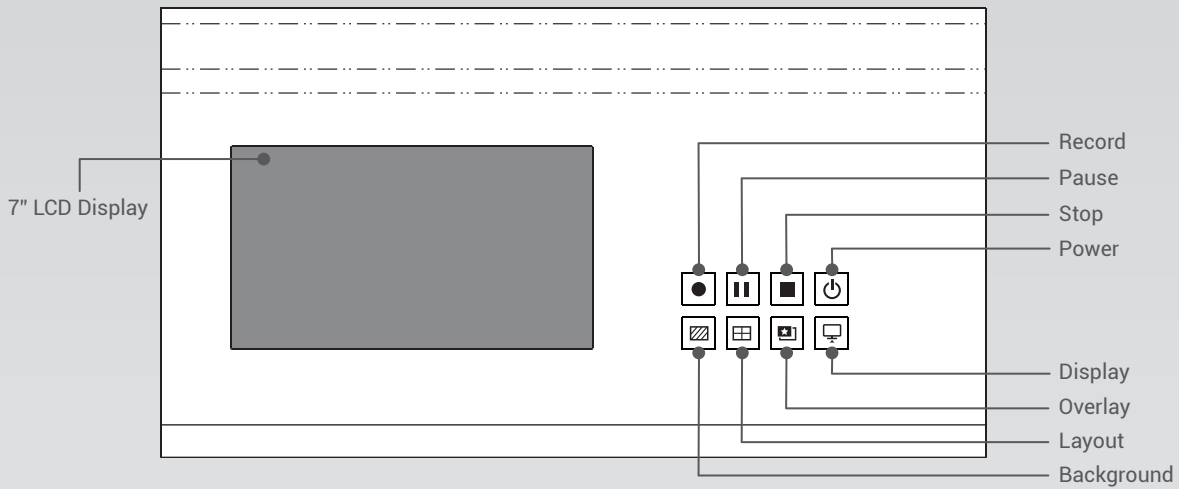
AREC Video Manager : Videos with Just One Click

With the built-in Video Manager, administrators or teachers can manage videos saved in the local Media Station remotely. They can download, upload or delete a video file, and edit video information. With available APIs, all of the video content, metadata, and thumbnail can be delivered seamlessly for third party integration.

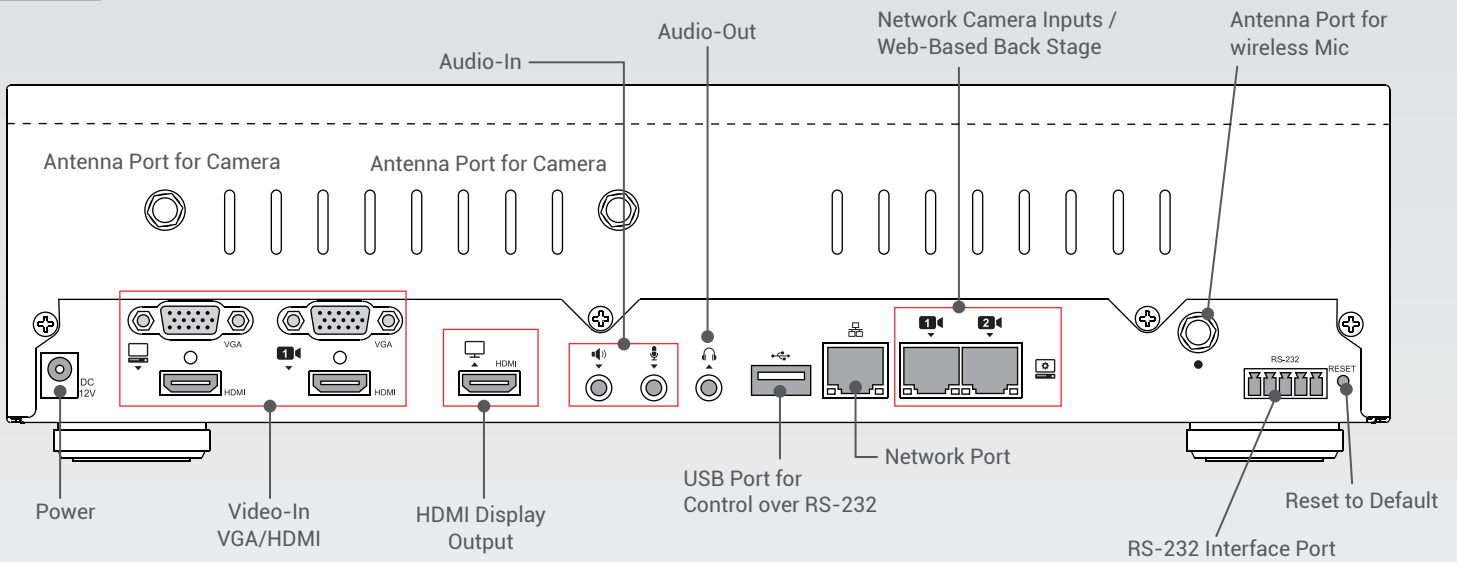


Product Interface

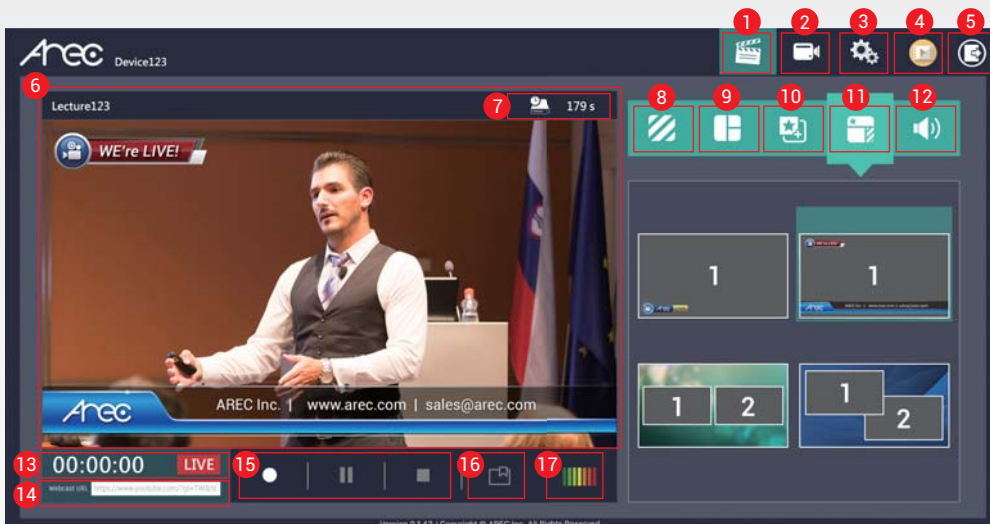
Top View



Back View



User Interface of Online Director



- 1 Online Director
- 2 Visual Sources Monitoring
- 3 Setup
- 4 Video Manager
- 5 Log Out
- 6 Program View for Recording
- 7 Remaining Time for Recording
- 8 Background Images
- 9 Recording Layouts
- 10 Overlay Images
- 11 Custom Themes
- 12 Audio Volume Control
- 13 Recording Time
- 14 Live Streaming URL
- 15 Start/Pause/Stop Recording and Streaming
- 16 Add Bookmark
- 17 Volume Meter

Specifications

Model Name	AREC KL-3W Media Station
Input Connection	
Video Inputs*	HDMI / VGA / RJ-45 (Supports AREC full HD network camera and wireless IP inputs)
	Available to receive live videos from iOS, Android smart phone and tablet through suggested live video streaming app Note: users should apply necessary settings to KL-3W and your 4G mobile device in advance. Please refer to KL-3W user manual for more details.
Max. Video-In channels	Maximum 3 channel synchronized recording
	HDMI / VGA : up to 2 channels Full HD network camera and streaming input : up to 3 channels
Video-In Modes	HDMI: 480i~1080p60 VGA video : 480i~1080p60 VGA PC : 640 x 480~1920 x 1080
Audio Inputs	Line in, Mic, wireless Mic, HDMI
Max. Audio-In channels	3.5mm Stereo : 2 channels Wireless Mic : 1 channel HDMI : 2 channels
WiFi Connection	
WiFi Connection Support	Yes, built-in WiFi module to support 2 wireless network camera inputs
Network Standards	IEEE 802.11 b / g / n 2x2
Operating Frequency	2.4 GHz
Video Processing	
Compression	H.264 / AVC
Frame Rate	Max. 30fps
Bit Rate	500Kbps~8Mbps
Resolution	Max. 1080p (320x240 ~ 1920x1080)
Audio Processing	
Compression	AAC-LC
Bit Rate	80Kbps~320Kbps
Video Output	
Built-in LCD Display	7" 800x480 TFT LCM LCD type : TFT / Transmissive
Video Output	1x HDMI display port (1 output option from loop-through, inputs monitoring and multi-source display)
Streaming / Main System Output	
Streaming Delay	1 sec.
Compatible Streaming Input Protocols	RTSP, RTP, RTMP, UDP
Streaming Output Protocols	RTP, RTMP (RTMPS), RTSP
	Note : 1. Users can choose 1 output option from RTP or RTMP only 2. RTP: MPEG2-TS over RTP unicast; MPEG2-TS over RTP multicast 3. RTSP (TCP / UDP): Max 6 clients RTSP streams available via public URL (example: pulled streams)
Main Output Mode (Max.)	HDMI / VGA* : 1080p60
Local Storage	
External Storage	Supports USB drive recording through the front port
Locally Stored File Format	MP4
Local Storage	1TB 2.5" SATAIII hard drive

Remote Storage	
FTP Backup	Video files will backed up automatically to FTP server after end of recording
Recording	
Camera Control	VISCA / PELCO-D / PELCO-P
Recording Modes	Mixed mode, 1 Mixed + 3 individual original sources
Recording Layouts	21 layouts for pre-defined, including full screen / picture-in-picture / picture-by-picture / multi-channel split screen
Bookmark	Automatic and manual bookmark insertion
Background Images	Multiple for user-defined
Overlay Images	Multiple for user-defined
Custom Themes	Multiple for user-defined, setting from web-based back stage
Live Broadcasting	
Live Broadcast to CDN or Stream Server	Yes, support RTMP protocol
Video Information Editing	
Post Video Info Editing	Yes, through Video Manager platform
Video Info Adding	Video info will be added on video file name automatically while file output or uploading
Operating Controls	
Video Switcher	Yes, through web-based Oline Director for manual controls
External Control	Yes, supports RS-232 interface port
Control Button	Yes, on the top of the media station
Video Manager	Built-in Video Manager platform: through web-based control interface
General Information	
Operation System	Embedded Linux system
LCD Screen	Yes, built-in 7" LCD
Power Supply	12V / 3A
Temperature / Humidity	0~40°C / 90%
Dimension	354mm(L) x 188.2mm(W) x 97mm(H)
Weight	2.7kg (5.9 lbs)
Language	SC / TC / English / Russian / Spanish / Czech
Accessories	Power adapter / wireless Mic antenna / quick guide / VGA line / HDMI line / RJ-45 line / HDMI to VGA converter** / WiFi module antenna x 2

* Supports DVI and component video cable inputs with appropriate DVI to HDMI or component to VGA adaptors.

** Please use genuine original AREC HDMI to VGA converter



AREC Inc. | www.arec.com | sales@arec.com

Headquarters: Taipei, Taiwan Address: 3F, No. 367, Sec.2, Wenhua RD., Banqiao Dist., New Taipei City 220, Taiwan (R.O.C)

TEL: +886-2-8259-5060



Exclusive Representative in Europe, Africa and CIS countries
ADENA Limited | www.a-dena.com
E-MAIL: yakov@a-dena.com
TEL: +886 2 2577 7667

AREC reserves the right to modify product specifications without prior notice.