



IP-CS9000

1G 4K60 AV over IP System Controller & Configurator



The IP-CS9000 Master Controller for the IP-9000 series 1G 4K60 444 AV over IP system, is a powerful and flexible solution for controlling multiple Video over IP (VoIP) extenders within the same network. Integrators simply install this unit into the same local network as the extenders (Transmitter and Receiver) to easily define and configure channel routing selections (including video, audio, IR, RS-232, and USB functionality), for both unicast and multicast scenarios, using the WebGUI. Using the Web GUI the user has access to a 'Monitor & Control' area for simple drag and drop control and switching of sources. It is also possible to define and switch customised groups or presets allowing for easy control over multiple video zones.

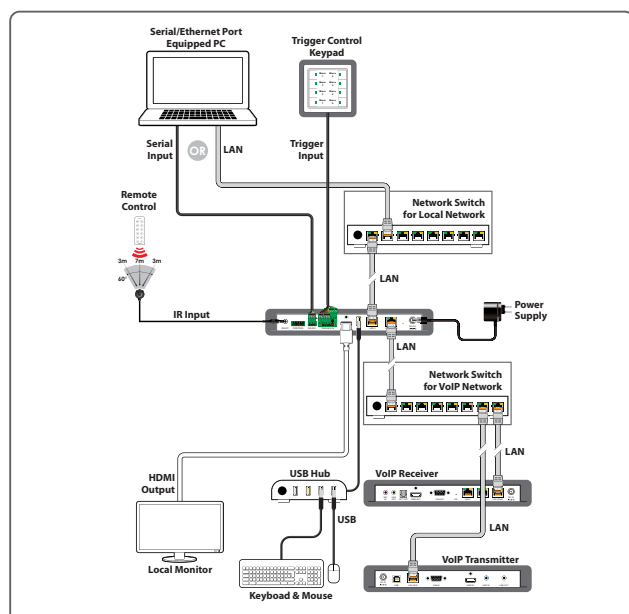
Dual LAN connectivity on the device allows the system to run on a bespoke IP network whilst the additional LAN allows for connection to a secondary network for control and configuration. This is particularly useful when access may be prohibited via the LAN network, the IP-CS9000 provides a direct link to the IP video network.

Additionally, this unit supports controlling and configuring the matrix and video wall modes of connected VoIP units. The settings of all connected Transmitter/Receiver units, including IP configuration, compatibility settings, and extender status are clearly displayed within the WebGUI. The WebGUI is easily accessed via a web browser over a normal network connection or by directly connecting an HDMI display and USB mouse to the unit. A trigger input interface is also provided to allow the easy addition of a 3rd party trigger. This interface can allow the user to activate stored macros with the simple press of a button. Standard control is available via WebGUI (remote or local), RS-232, Telnet, IR Remote and triggers.

PANELS



DIAGRAM



FEATURES

- Enables the management and configuration of multiple compatible extenders through a single WebGUI
- Can be powered by Ethernet switches supporting the IEEE 802.3af 2003 PoE standard (Optional)
- Standard control is available via WebGUI (remote or local), RS-232, Telnet, and IR Remote
- Supports USB over IP control of multiple PC systems
- Control over both matrix and TV wall modes using WebGUI macros
- Dual LAN ports enable control over VoIP installations that reside on a logically or physically separate network from the standard local network
- Trigger Control Keypad support for easy, single-button, macro activation (Optional)
- Definable display groups
- HDMI output displays the WebGUI and system status
- Supports the use of a USB mouse and keyboard to locally control the WebGUI
- WebGUI clearly displays the status of all connected Transmitters and Receivers, including IP address, channel selection, etc.
- Provides control over the independent routing of video, audio and control signals between all local compatible transmitters and receivers
- Supports point-to-point (unicast) and multi-to-multi (multicast) routing selections
- Can generate serial commands to directly control an external serial-controllable device via telnet

SPECIFICATIONS

Interfaces

Output Port	1 HDMI (Type-A)
Control I/O	1 IR Extender (3.5mm) 1 RS-232 (3-pin Terminal Block) 8 Trigger (10-pin Terminal Block) 1 USB (Type-A) 2 LAN (RJ-45)
Reserved Port	1 RS-232 (5-pin Terminal Block)

Video

HDMI Compliance	1.4
Output Signal Type	1920x1080p@60

Resolutions

Maximum Output	HDMI	1920x1080p@60
----------------	------	---------------

Power

Power Supply	5V/2.6A DC (Locking)
Power Consumption	2.99W

Enclosure

Chassis Material	Metal (Steel)
Chassis Color	Black
Dimensions (W×H×D)	231.5mm×25mm×108mm [Case Only] 231.5mm×25mm×117mm [All Inclusive]
Weight	648g

Field Firmware Update

USB Flash Drive, WebGUI

ORDERING INFORMATION

Model No.	Product Description
IP-CS9000	1G 4K60 AV over IP System Controller & Configurator
IP-9000TX	1G 4K60 AV over IP Transmitter with USB & PoE
IP-9000RX	1G 4K60 AV over IP Receiver with USB & PoE