

AT-GAIN-M120 AT-GAIN-M240

120 W and 240 W Mixer Amplifiers



AT-GAIN-M120 – AT-GAIN-M240

Introduction

- What they are
 - Mixer amplifiers designed for low or high impedance education and commercial applications.
 - GAIN-M120 – 120 watts total, 4 or 8 ohm, 70 or 100 volt modes
 - GAIN-M240 – 240 watts total, 4 or 8 ohm, 70 or 100 volt modes
 - Four analog configurable inputs – mic, line, mono, stereo
 - Advanced signal processing
 - Optional components:
 - AT-GAIN-VOL and AT-GAIN-NET

- Why we made them
 - Replace AT-GAIN-120
 - More inputs and types (mic/line), advanced signal processing

- Value proposition
 - Highly configurable mixer amplifier for either low or high impedance applications.



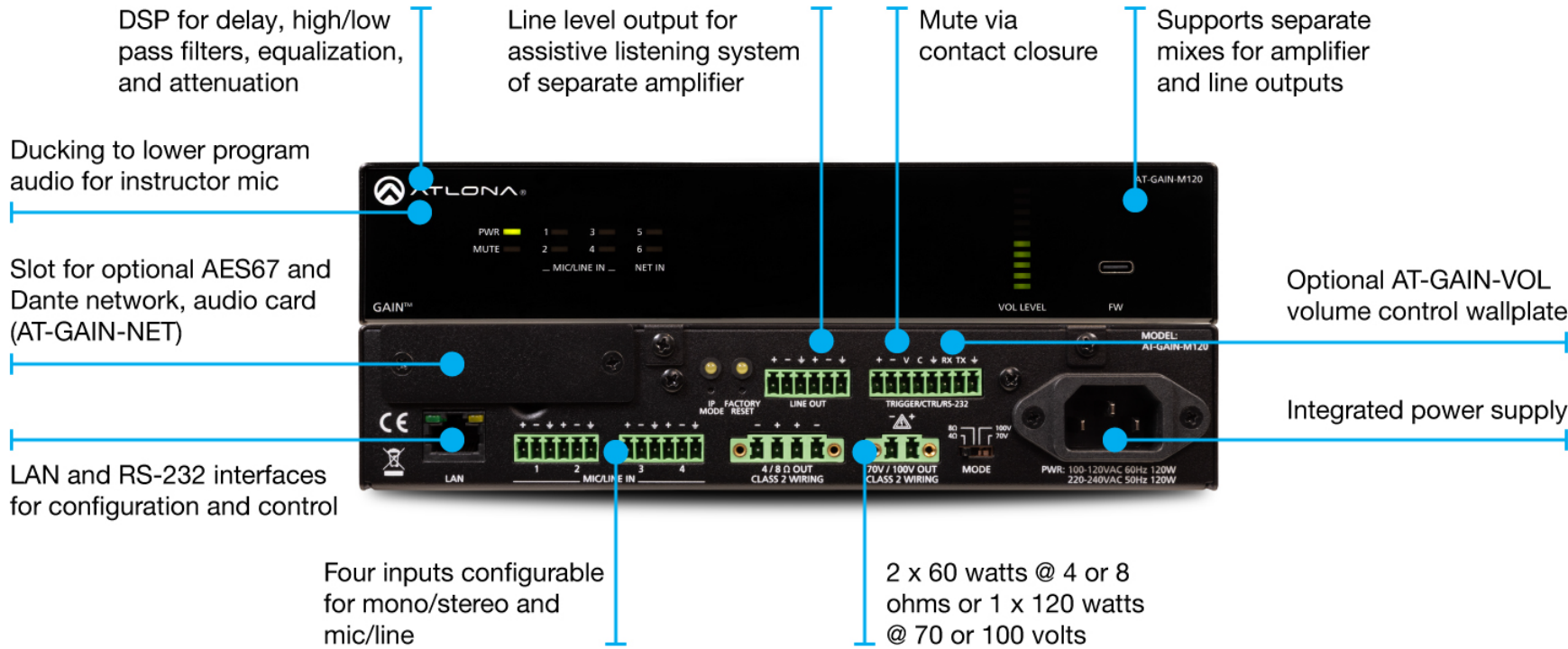
AT-GAIN-M120



AT-GAIN-M240

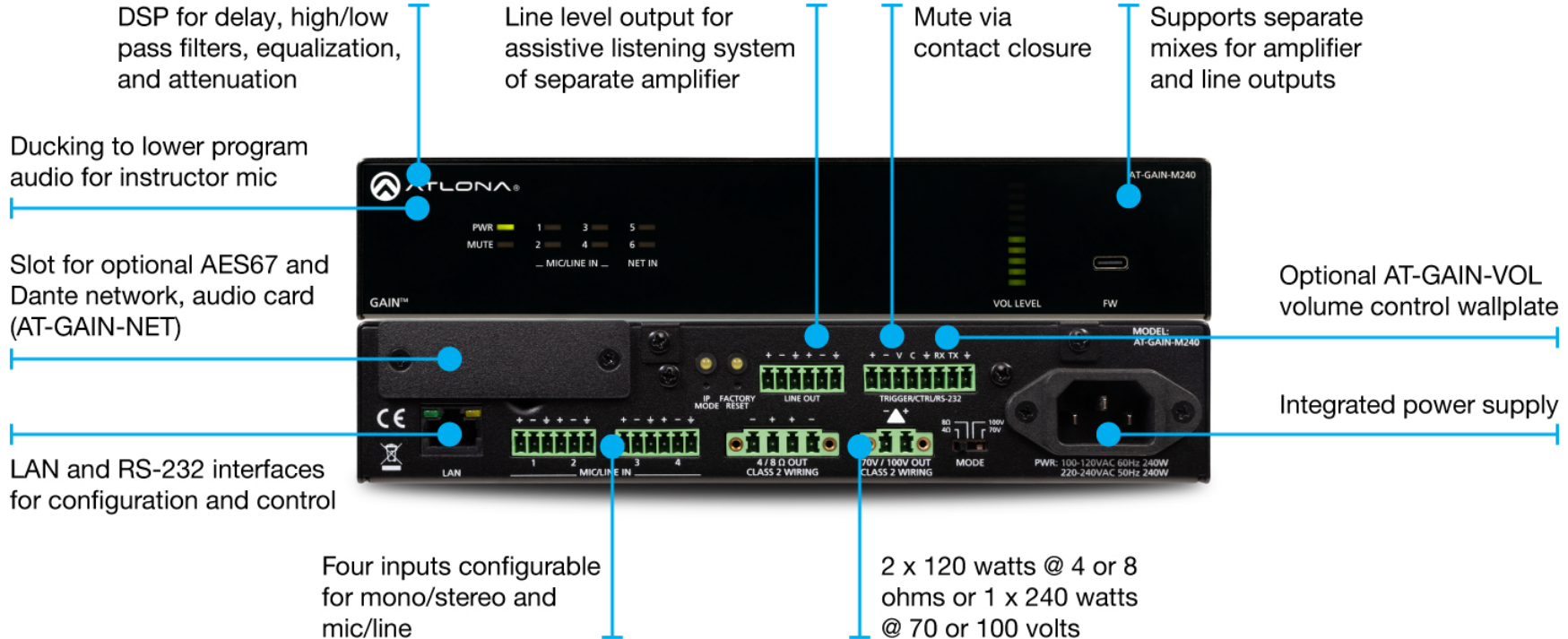
AT-GAIN-M120

Feature Overview



AT-GAIN-M240

Feature Overview



UI Overview

Mixer

☰
AT-GAIN-M240-30fc52
Log Out

Mixer
EQ
Ducking

Inputs:
Gain
Mute
Mode
Type
Phantom Power

Mic/Line 1	0 dB <input type="range" value="0"/>	On Off	Mono Stereo	Balance	On Off
Mic/Line 2	0 dB <input type="range" value="0"/>	On Off			On Off
Mic/Line 3	0 dB <input type="range" value="0"/>	On Off	Mono Stereo	Microphone	On Off
Mic/Line 4	0 dB <input type="range" value="0"/>	On Off		Microphone	On Off

Outputs:
Gain
Mute
Mode

Amp Out L	-21 dB <input type="range" value="-21"/>	On Off	Mono Stereo
Amp Out R	-21 dB <input type="range" value="-21"/>	On Off	
Line Out L	0 dB <input type="range" value="0"/>	On Off	Mono Stereo
Line Out R	0 dB <input type="range" value="0"/>	On Off	

Mixer:
Input
Gain
Mute

Amp Out L	Mic/Line 1	0 dB <input type="range" value="0"/>	On Off
Amp Out R	Mic/Line 2	0 dB <input type="range" value="0"/>	On Off
Line Out L	Mic/Line 3	0 dB <input type="range" value="0"/>	On Off
Line Out R	Mic/Line 4	0 dB <input type="range" value="0"/>	On Off

UI Overview

EQ

☰
AT-GAIN-M240-30fc52
Log Out

Mixer
EQ
Ducking

⚙️
🔊
📄
🔧

Amp Out L ⊖

Delay	High Pass Filter reset	Low Pass Filter reset	Attenuator
<input type="text" value="0"/> ms	Cut-Off Frequency <input type="text" value="100"/> hz	Cut-Off Frequency <input type="text" value="12000"/> hz	Level <input type="text" value="0"/> dB
	Slope <input type="text" value="6dB/oct"/> ▾	Slope <input type="text" value="6dB/oct"/> ▾	Mute <input type="checkbox"/> On <input type="checkbox"/> Off
	Enable <input type="checkbox"/> On <input type="checkbox"/> Off	Enable <input type="checkbox"/> On <input type="checkbox"/> Off	

EQ reset

Band1	Band2	Band3	Band4	Band5
Enable <input type="checkbox"/> On <input type="checkbox"/> Off	Enable <input type="checkbox"/> On <input type="checkbox"/> Off	Enable <input type="checkbox"/> On <input type="checkbox"/> Off	Enable <input type="checkbox"/> On <input type="checkbox"/> Off	Enable <input type="checkbox"/> On <input type="checkbox"/> Off
Center frequency <input type="text" value="100"/> hz	Center frequency <input type="text" value="500"/> hz	Center frequency <input type="text" value="1000"/> hz	Center frequency <input type="text" value="5000"/> hz	Center frequency <input type="text" value="10000"/> hz
Quality factor <input type="text" value="1"/>	Quality factor <input type="text" value="1"/>	Quality factor <input type="text" value="1"/>	Quality factor <input type="text" value="1"/>	Quality factor <input type="text" value="1"/>
Amplitude <input type="text" value="0"/>	Amplitude <input type="text" value="0"/>	Amplitude <input type="text" value="0"/>	Amplitude <input type="text" value="0"/>	Amplitude <input type="text" value="0"/>

Amp Out R reset

Band1	Band2	Band3	Band4	Band5
Enable <input type="checkbox"/> On <input type="checkbox"/> Off	Enable <input type="checkbox"/> On <input type="checkbox"/> Off	Enable <input type="checkbox"/> On <input type="checkbox"/> Off	Enable <input type="checkbox"/> On <input type="checkbox"/> Off	Enable <input type="checkbox"/> On <input type="checkbox"/> Off
Center frequency <input type="text" value="100"/> hz	Center frequency <input type="text" value="500"/> hz	Center frequency <input type="text" value="1000"/> hz	Center frequency <input type="text" value="5000"/> hz	Center frequency <input type="text" value="10000"/> hz
Quality factor <input type="text" value="1"/>	Quality factor <input type="text" value="1"/>	Quality factor <input type="text" value="1"/>	Quality factor <input type="text" value="1"/>	Quality factor <input type="text" value="1"/>
Amplitude <input type="text" value="0"/>	Amplitude <input type="text" value="0"/>	Amplitude <input type="text" value="0"/>	Amplitude <input type="text" value="0"/>	Amplitude <input type="text" value="0"/>

Line Out R ⊖





Delay	High Pass Filter reset	Low Pass Filter reset	Attenuator
<input type="text" value="0"/> ms	Cut-Off Frequency <input type="text" value="100"/> hz	Cut-Off Frequency <input type="text" value="12000"/> hz	Level <input type="text" value="0"/> dB
	Slope <input type="text" value="6dB/oct"/> ▾	Slope <input type="text" value="6dB/oct"/> ▾	Mute <input type="checkbox"/> On <input type="checkbox"/> Off
	Enable <input type="checkbox"/> On <input type="checkbox"/> Off	Enable <input type="checkbox"/> On <input type="checkbox"/> Off	

UI Overview

Ducking

Log Out
AT-GAIN-M240-30fc52

Mixer
EQ
Ducking

Mic/Line 1 -

Enable: On Off

Attack Time: ms

Release Time: ms

Depth: dB

Trigger: dB

Mic/Line 2 -

Enable: On Off

Attack Time: ms

Release Time: ms

Depth: dB

Trigger: dB

Mic/Line 3 -

Enable: On Off

Attack Time: ms

Release Time: ms

Depth: dB

Trigger: dB

Mic/Line 4 -

Enable: On Off

Attack Time: ms

Release Time: ms

© 2026 Hall Research. All rights reserved.

7

Optional AT-GAIN-VOL

Key Features

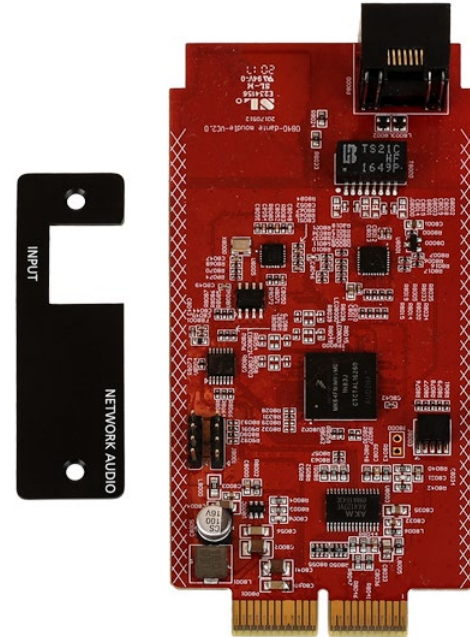
- Volume control wallplate
- Provides easy-to-use manual audio level control
- Volume control range is from no audio (mute) to maximum output level
- 3-pin captive-screw connection
- US one-gang enclosure for wallplate openings
- Interchangeable black or white trim kits included



Optional AT-GAIN-NET

Key Features

- Networked audio interface card for the GAIN-M120 and GAIN-M240 amplifiers.
- Accepts two audio channels of Dante® or AES67
- Compatible with AES67 streams from Atlona OmniStream AV encoders
- Simple, plug-and-play field installation
- AES67 / Dante M series allow for Dante routing without the Dante Controller software



AT-GAIN-M120 – AT-GAIN-M240

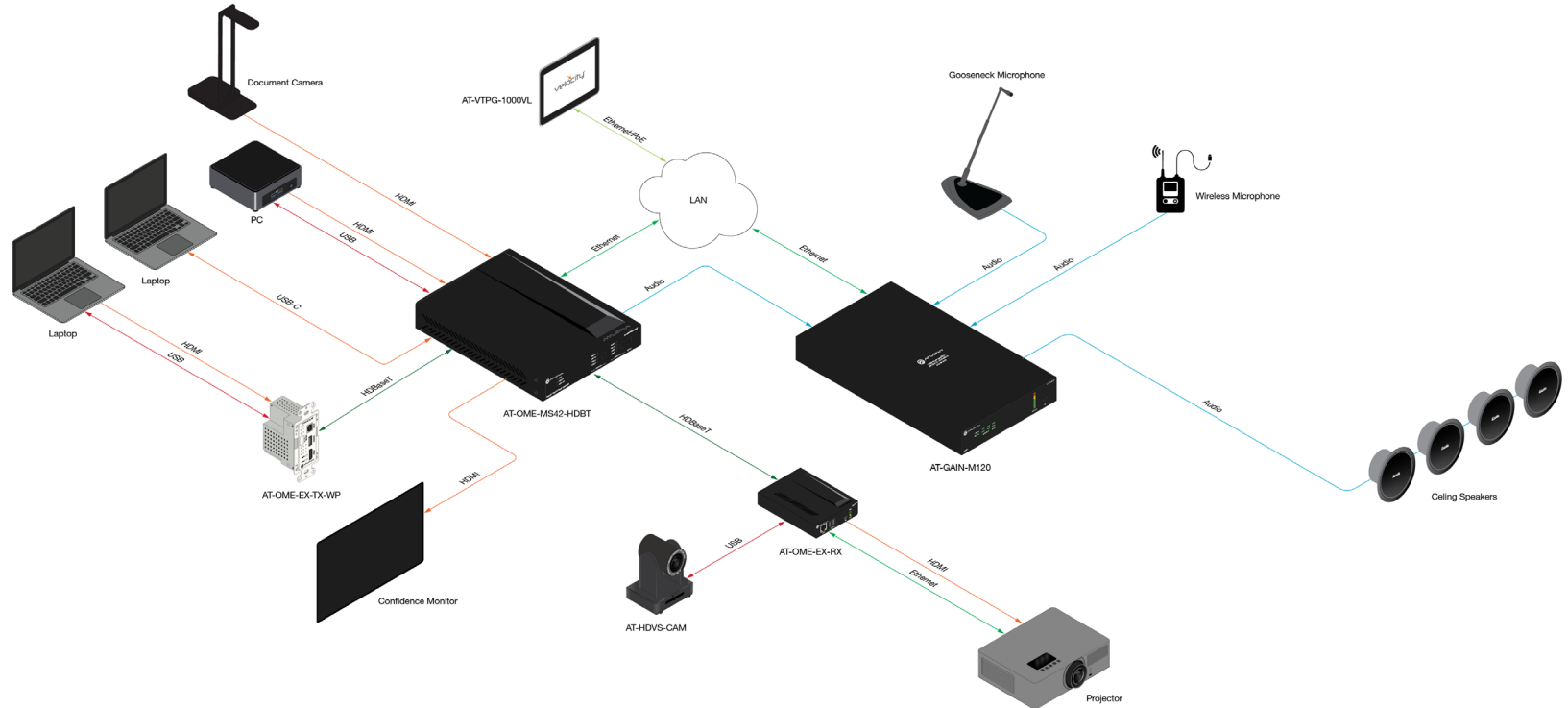
Applications

- Education
- Commercial



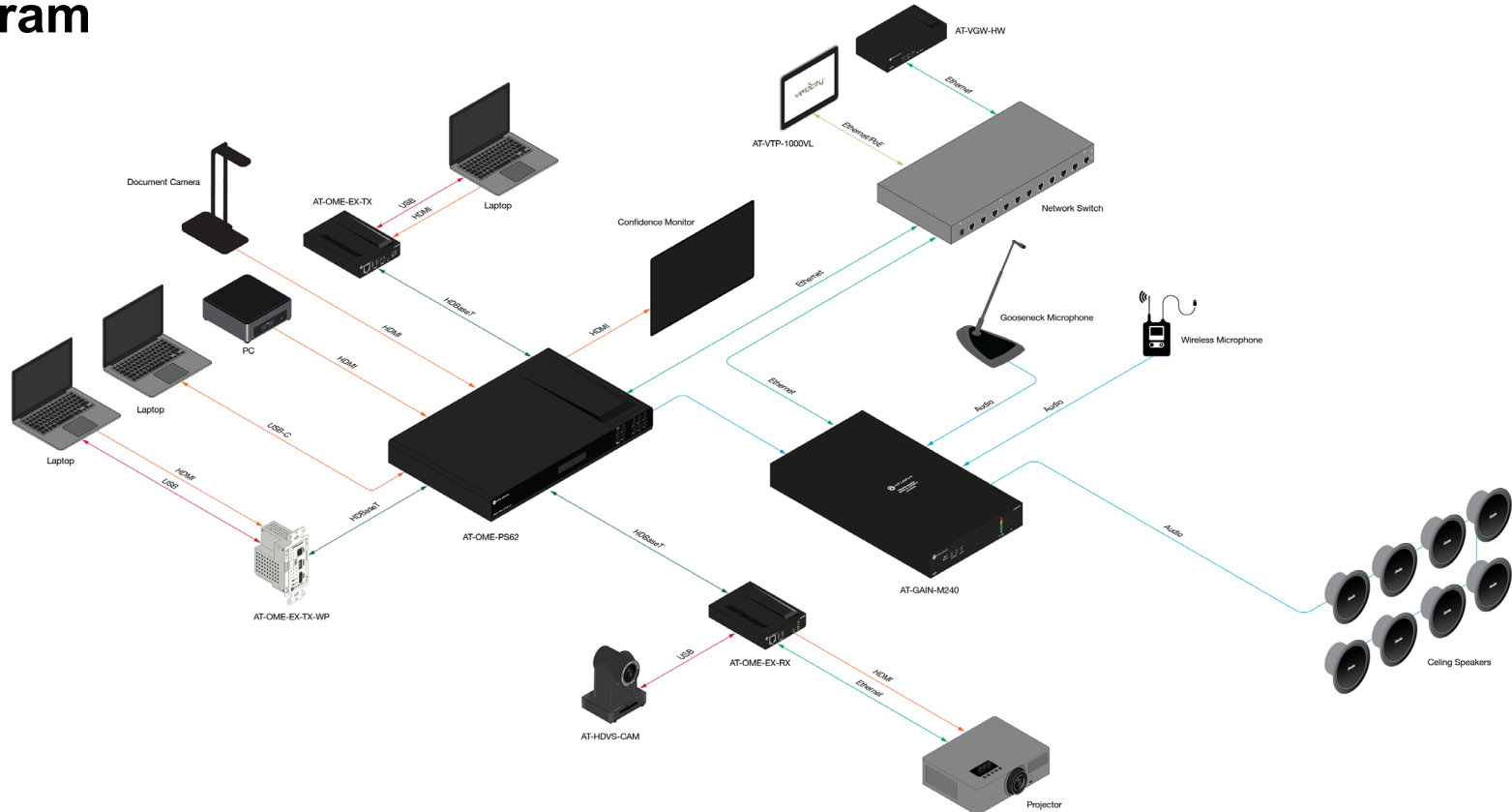
AT-GAIN-M120

Diagram



AT-GAIN-M240

Diagram



AT-GAIN-M120

Parts, Pricing, Dates, and Resources

	AT-GAIN-M120
Description	Stereo / Mono Mixer Amplifier - 120 Watts
MSRP	\$ 1,150
Availability	January 21, 2026
Web page	https://atlonac.com/product/at-gain-m120 (coming January 21, 2026)

AT-GAIN-M240

Parts, Pricing, Dates, and Resources

	AT-GAIN-M240
Description	Stereo / Mono Mixer Amplifier - 240 Watts
MSRP	\$ 1,400
Availability	January 21, 2026
Web page	https://atlona.com/product/at-gain-m240 (coming January 21, 2026)